

# Einstellungen des BIOS für Homeserver 2.0 net

Award BIOS 1984 – 2001

Gründe für die Korrektur sind z.B. der Ausfall bzw. präventive Wechsel der CMOS Stützbatterie CR 2032.

Über die Taste DEL/Entfernen die man während der Startphase betätigt erreicht man die Masken für die Einstellungen.

Der Zugriff auf die Bioeinstellungen ist im Auslieferungszustand durch ein Passwort geschützt.

Erscheint eine Passwortabfrage so ist eine Verstellung des Bios unwahrscheinlich.

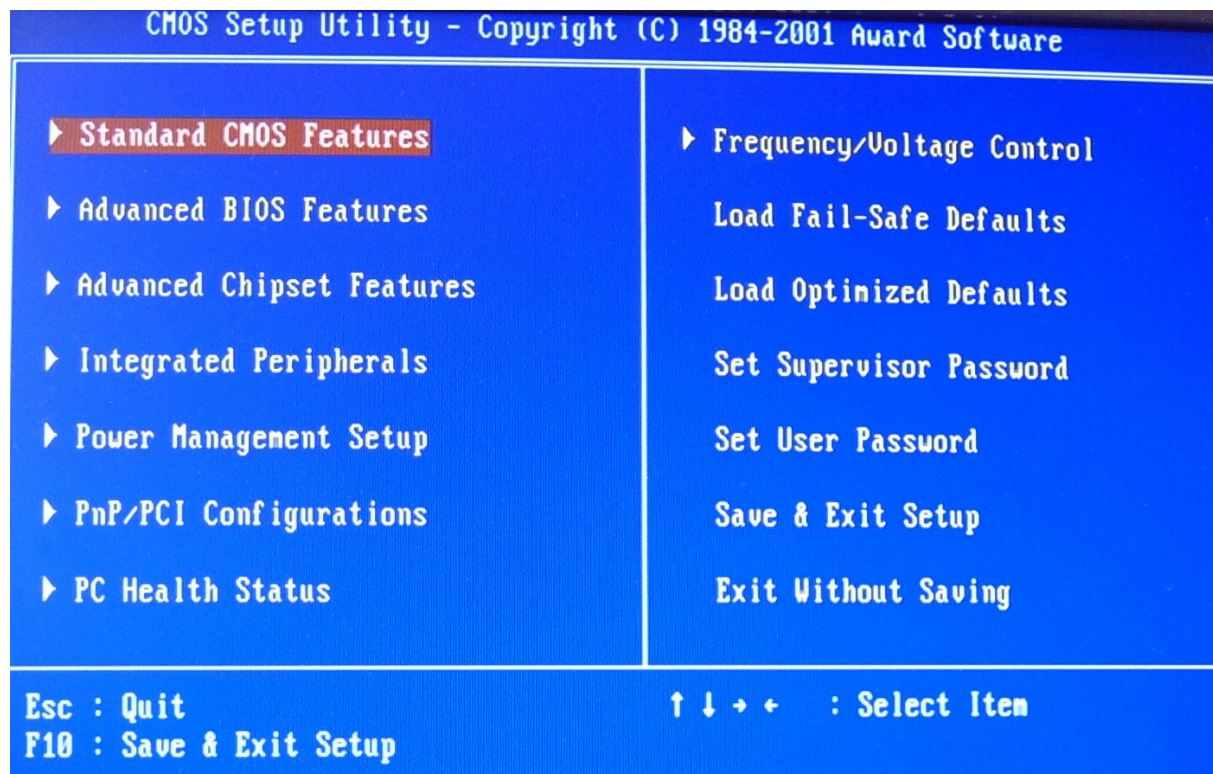
Erscheint keine Passwortabfrage so ist der Verlust der werksseitigen BIOS-Einstellungen eingetreten.

Folgende Masken zeigen die notwendigen Einstellungen.

Es müssen alle Einstellungen aus diesem Dokument mit den BIOS Einstellungen im HS verglichen und ggf. im HS geändert werden.

Masken die hier nicht aufgeführt sind, benötigen keine Veränderung.

## 1. Standard CMOS Features



CMOS Setup Utility - Copyright (C) 1984-2001 Award Software		
Standard CMOS Features		
Date (mm:dd:yy)	Wed, Feb 15 2006	Item Help
Time (hh:mm:ss)	13 : 7 : 19	
▶ IDE Primary Master	None	Menu Level ▶ Change the day, month, year and century
▶ IDE Primary Slave	LG CD-ROM CRD-85	
▶ IDE Secondary Master	IDE	
▶ IDE Secondary Slave	None	
Drive A	None	
Drive B	None	
Video	EGA/UGA	
Halt On	All , But Keyboard	
Base Memory	640K	
Extended Memory	121856K	
Total Memory	122880K	

## 2. Advanced BIOS Features

CMOS Setup Utility - Copyright (C) 1984-2001 Award Software	
▶ Standard CMOS Features	▶ Frequency/Voltage Control
▶ <b>Advanced BIOS Features</b>	Load Fail-Safe Defaults
▶ Advanced Chipset Features	Load Optimized Defaults
▶ Integrated Peripherals	Set Supervisor Password
▶ Power Management Setup	Set User Password
▶ PnP/PCI Configurations	Save & Exit Setup
▶ PC Health Status	Exit Without Saving
Esc : Quit	↑ ↓ → ← : Select Item
F10 : Save & Exit Setup	
Virus Protection, Boot Sequence...	

CMOS Setup Utility - Copyright (C) 1984-2001 Award Software  
Advanced BIOS Features

Anti-Virus Protection	<b>Disabled</b>	<p>Item Help</p> <p>Menu Level ▶</p> <p>Allows you to choose the VIRUS warning feature for IDE Hard Disk boot sector protection. If this function is enabled and someone attempt to write data into this area , BIOS will show a warning message on screen and alarm beep</p>
CPU Internal Cache	Enabled	
External Cache	Enabled	
CPU L2 Cache ECC Checking	Enabled	
Quick Power On Self Test	Enabled	
First Boot Device	CDROM	
Second Boot Device	Disabled	
Third Boot Device	Disabled	
Boot Other Device	Disabled	
Swap Floppy Drive	Disabled	
Boot Up Floppy Seek	Disabled	
Boot Up NumLock Status	On	
Gate A20 Option	Normal	
Typenatic Rate Setting	Disabled	
x Typenatic Rate (Chars/Sec)	6	
x Typenatic Delay (Msec)	250	
Security Option	Setup	
MPS Version Control For OS	1.4	

Boot Other Device	Disabled	<p>Menu Level ▶</p>
Swap Floppy Drive	Disabled	
Boot Up Floppy Seek	Disabled	
Boot Up NumLock Status	On	
Gate A20 Option	Normal	
Typenatic Rate Setting	Disabled	
x Typenatic Rate (Chars/Sec)	6	
x Typenatic Delay (Msec)	250	
Security Option	Setup	
MPS Version Control For OS	1.4	
OS Select For DRAM > 64MB	Non-OS2	
Video BIOS Shadow	Enabled	
C8000-CBFFF Shadow	Disabled	
CC000-CFFFF Shadow	Disabled	
D0000-D3FFF Shadow	Disabled	
D4000-D7FFF Shadow	Disabled	
D8000-DBFFF Shadow	Disabled	
DC000-DFFFF Shadow	<b>Disabled</b>	

↑↓←→:Move Enter:Select +/-/PU/PD:Value F10:Save ESC:Exit F1:General Help  
F5: Previous Defaults F6: Fail-Safe Defaults F7: Optimized Defaults





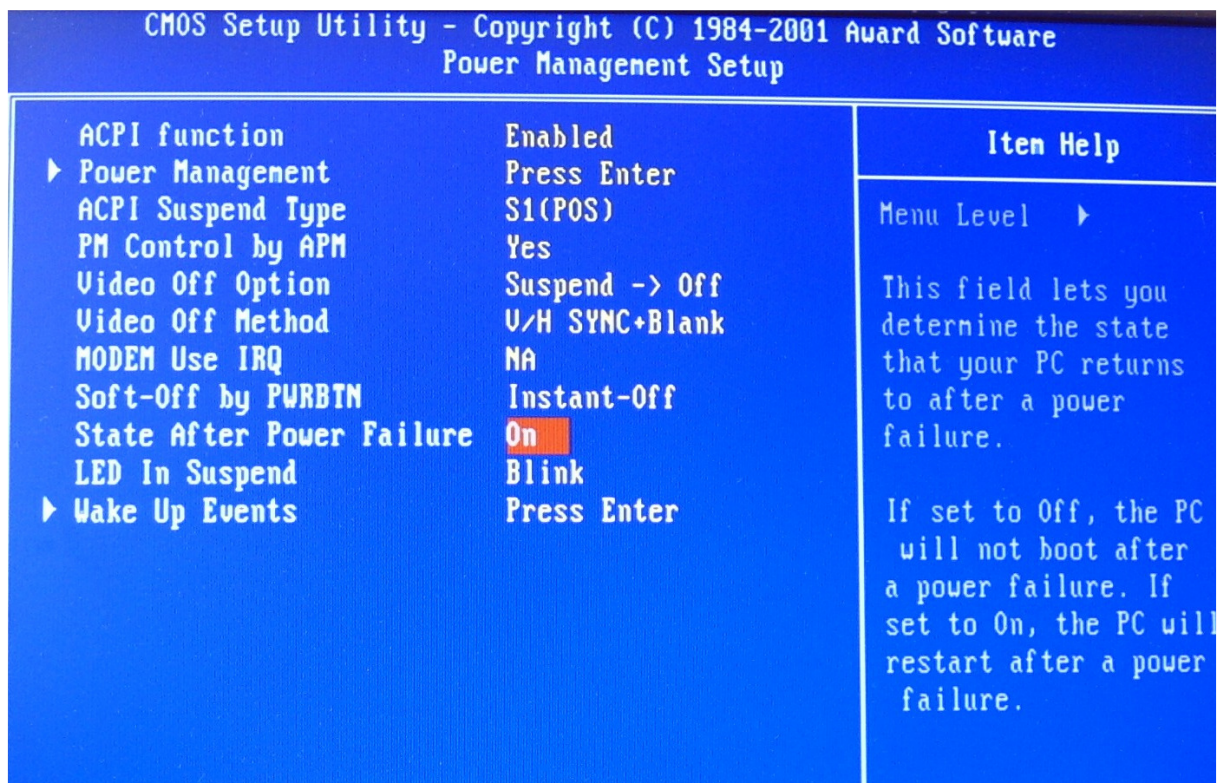
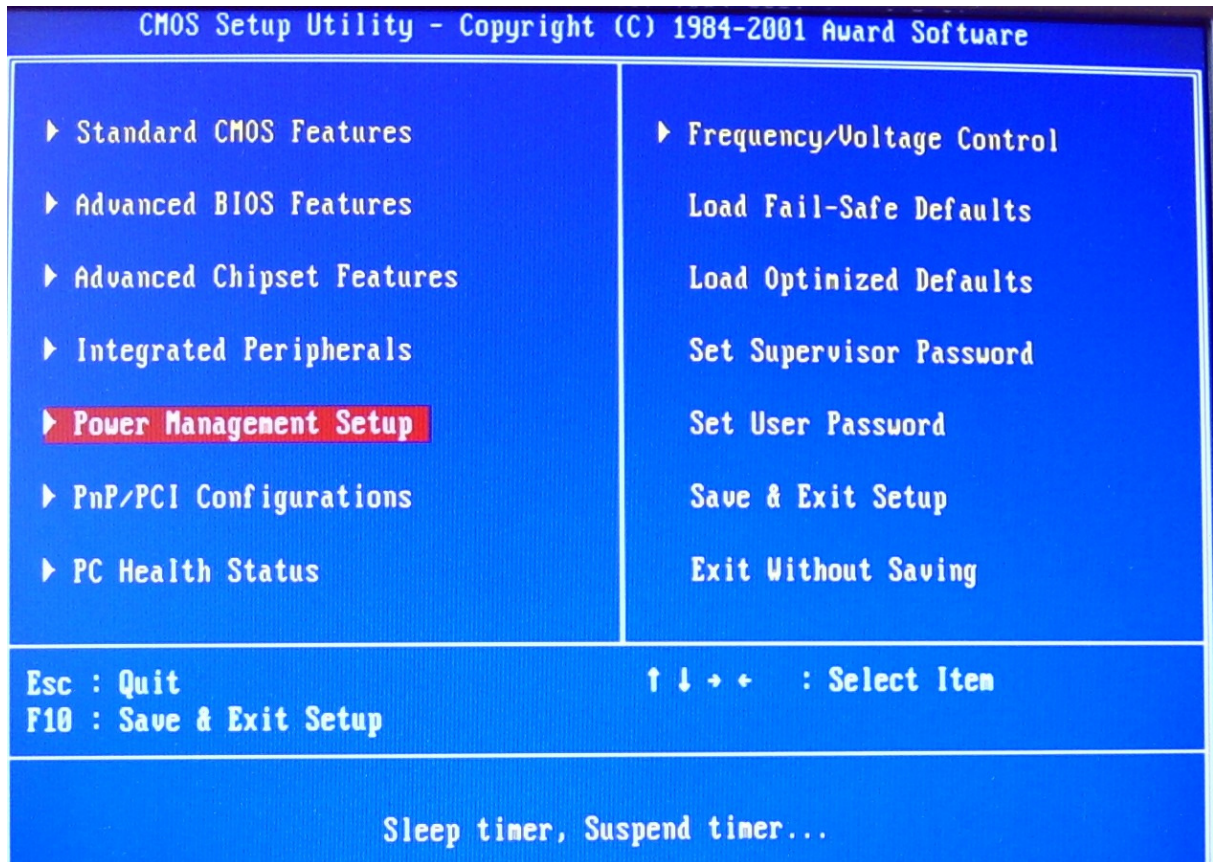
CMOS Setup Utility - Copyright (C) 1984-2001 Award Software  
Integrated Peripherals

OnChip IDE Channel0	<b>Enabled</b>	▲	Item Help
OnChip IDE Channel1	Enabled		
IDE Prefetch Mode	Enabled		Menu Level ▶
Primary Master PIO	Auto		
Primary Slave PIO	Auto		
Secondary Master PIO	Auto		
Secondary Slave PIO	Auto		
Primary Master UDMA	Auto		
Primary Slave UDMA	Auto		
Secondary Master UDMA	Auto		
Secondary Slave UDMA	Auto		
Init Display First	PCI Slot		
Onboard Lan Device	Enabled		
IDE HDD Block Mode	Enabled		
Onboard Lan Boot ROM	Disabled		
Onboard FDD Controller	Disabled		
Onboard Serial Port 1	3F8/IRQ4		
Onboard Serial Port 2	2F8/IRQ3		

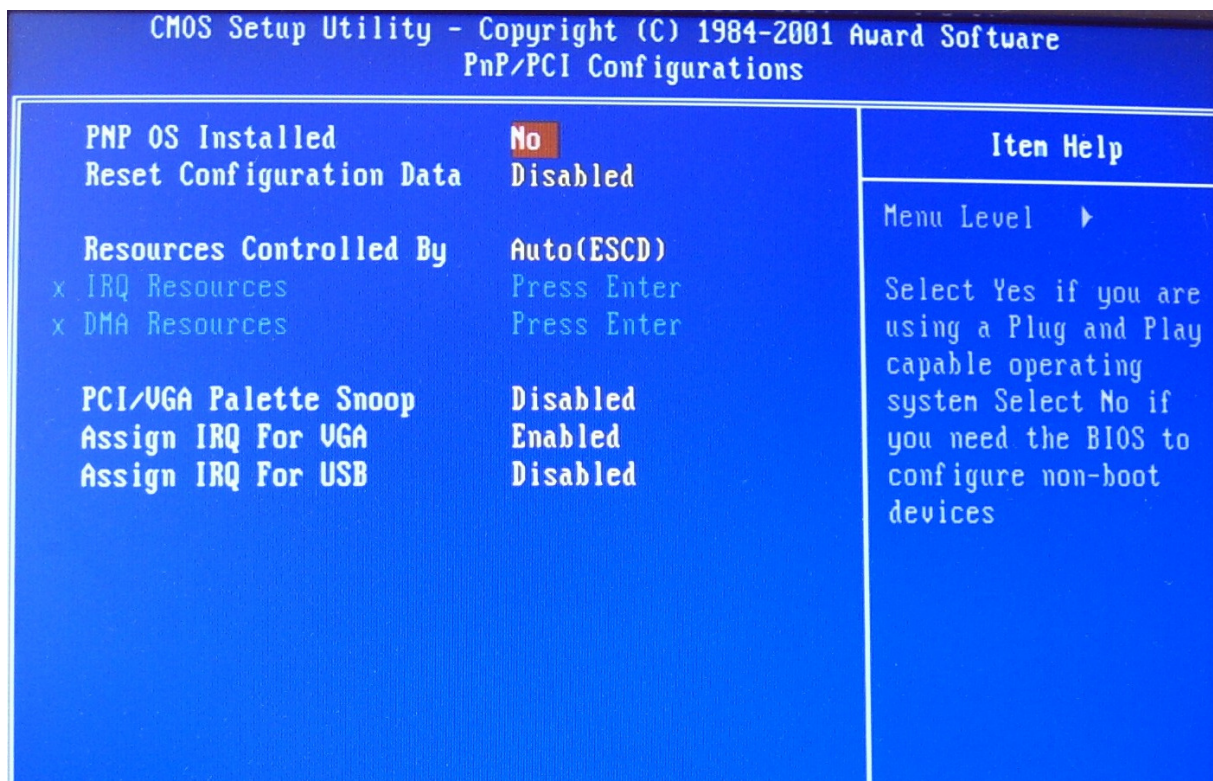
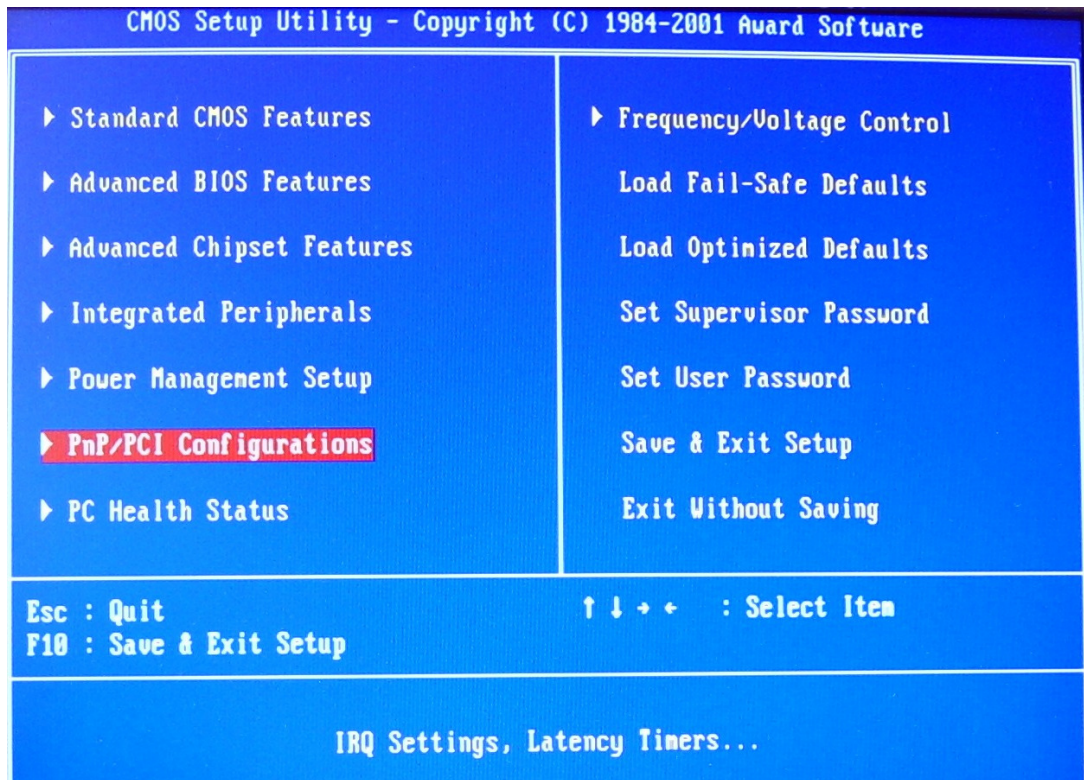
Onboard Lan Boot ROM	Disabled	▲	Item Help
Onboard FDD Controller	Disabled		
Onboard Serial Port 1	3F8/IRQ4		Menu Level ▶
Onboard Serial Port 2	2F8/IRQ3		
UART 2 Mode	Standard		
x IR Function Duplex	Half		
x TX,RX inverting enable	No, Yes		
<b>Onboard Parallel Port</b>	<b>Disabled</b>		
x Onboard Parallel Mode	Normal		
x ECP Mode Use DMA	3		
x Parallel Port EPP Type	EPP1.9		
<b>Onboard Legacy Audio</b>	<b>Disabled</b>		
x Sound Blaster	Disabled		
x SB I/O Base Address	220H		
x SB IRQ Select	IRQ 5		
x SB DMA Select	DMA 1		
x MPU-401	Disabled		
x MPU-401 I/O Address	330-333H		
x Game Port (200-207H)	Disabled	▼	

Alt+M: Main Menu F5: Select Item F6: (P) (U) (D) (I) (L) (V) F10: Save F5C: Exit F1: General Help

## 5. Power Managent Setup



## 6. PnP/PCI Configurations







## 8. Frequency/Voltage Control

